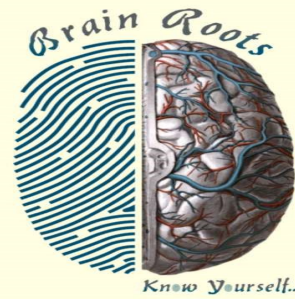


NEEL INFO TECH

Step with us



Corporate Office :
26/44-C, Maruthi Flats, Lakshmi Nagar, 6th Street, Nanganallur, Chennai - 600061
mail : info@neelinfotech.net

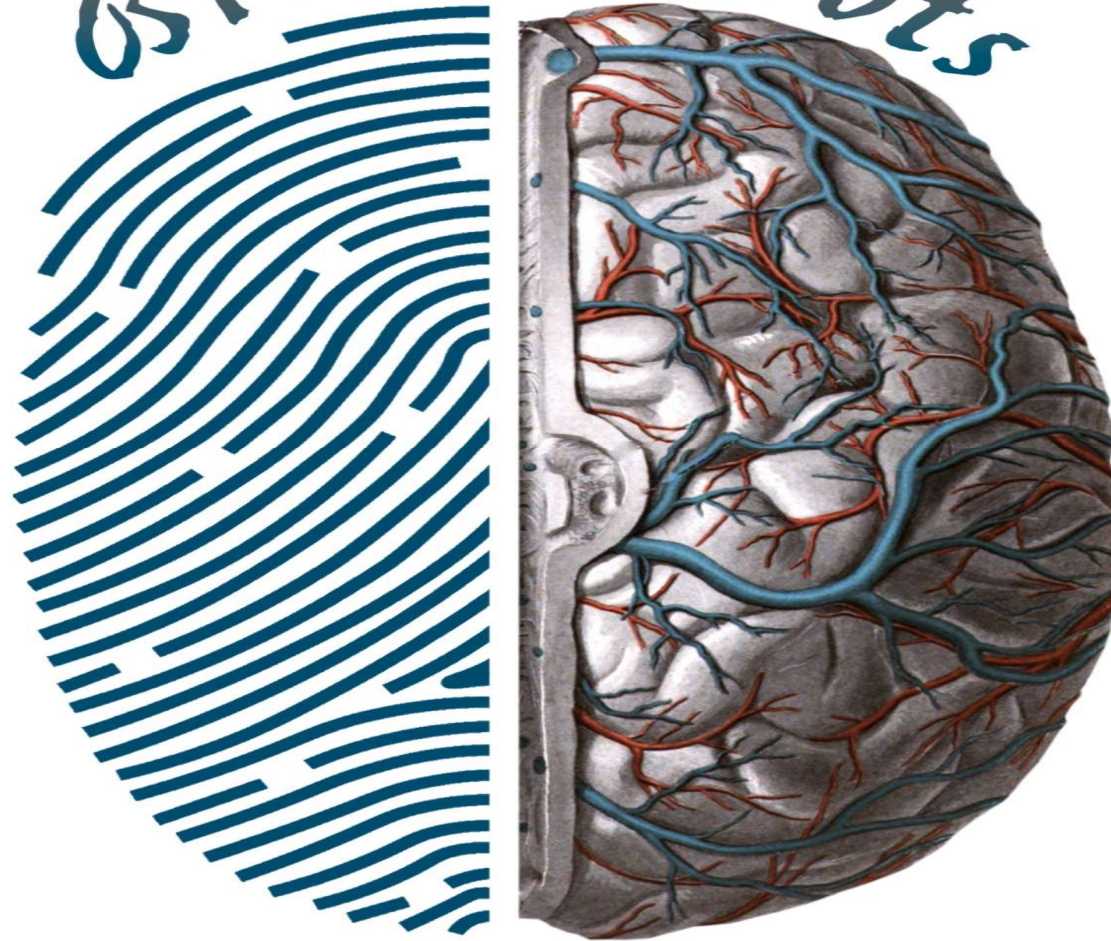
Administrative Office :
19-B, Poongavanam Street, Chennai Salai, Krishnagiri - 635001.
web : www.neelinfotech.net

NEEL INFO TECH

Step with us



Brain Roots



Know Yourself..

I love my child, **BUT ??** Do I know Him ?



NEELINFOTECH@ NIT

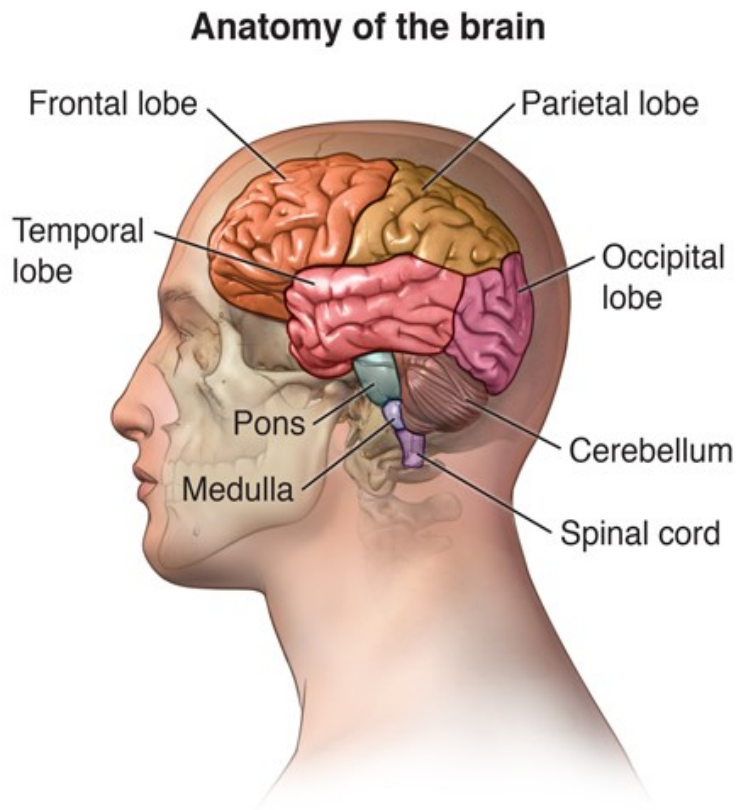
**INTRODUCING
An
Innovative Product**



**Brain Mapping Intelligence Test.
(BMIT)**

BMIT Test – What all it reveals ?

KNOW YOUR BRAIN?



Left Brain Vs Right Brain

Left brain

Right side of body control

- Number skills
- Math/Scientific skills
- Written language
- Spoken language
- Objectivity
- Analytical
- Logic
- Reasoning

Right brain

Left side of body control

- 3D shapes
- Music/Art awareness
- Intuition
- Creativity
- Imagination
- Subjectivity
- Synthesizing
- Emotion
- Face recognition

PARIETAL	Intelligence, language, reading, sensation
FRONTAL	Behaviour, intelligence, memory, movement
OCCIPITAL	Lobe, vision
TEMPORAL	Behaviour, hearing, speech, vision, memory
CEREBELLUM	Balance, coordination
BRAIN STEM	Blood pressure, breathing, heartbeat, swallowing

Amazing facts about the brain:

- 86 BILLION NEURONS
- 2% OF TOTAL WEIGHT
- 3-1000TB
- CONTAINS 8% FAT
- CONSUMES 20% OF ENERGY
- AVERAGE WEIGHT IS 1300g



BMIT Benefits



inborn talent

Everyone is a genius. But if you judge a fish on its ability to climb a tree, it will live its whole life believing that it is stupid.

-A Einstein



- Every child cannot be a Doctor, Engineer, Lawyer or a Chartered Accountant but every child can surely become “Something”(Inborn Talent)
- What is that “Something”(Inborn Talent)?
- Find out your inborn talent with BMIT report.

BMIT Benefits

Personality & Behavior



Dr. William M. Marston was a psychologist and an anthropologist who after studying thousands of human behaviors and their personalities, developed the concept of DISC profile. It divides the human personalities into 4 categories i.e. Dominant, Influential, Steady & Compliant. DISC profile has been in use for many years for multiple purposes like sales, marketing, management, HR, alliances etc.

DOMINANT

Eagles are dominant, stimulated by challenge decisive and direct. Eagles can be blunt/stubborn can lose sight of the big picture and can be insensitive to other people's needs. Eagles are natural achievers.



COMPLIANT

The owl is logical, mathematical minded, methodical and seen as a perfectionist. The owl can be slow to make decisions and inflexible if rules and logic says otherwise. Owls are not big risk takers but love detail.

INFLUENCE

The peacock loves to talk & enjoys being the center of attention has enthusiasm and is happy & optimistic. Peacock can be accused of talking too much, and aren't good with detail or time-control.



STEADY

The dove is people-orientated loyal, friendly, hard working and a great team player but tends to avoid change, confrontation, risk-taking and assertiveness.

2. Personality & Behaviour

(DISC PROFILE)

Dominant
(Eagle)



Influential
(Peacock)



Compliant
(Owl)



Steady
(Dove)



- Find out your personality with our report

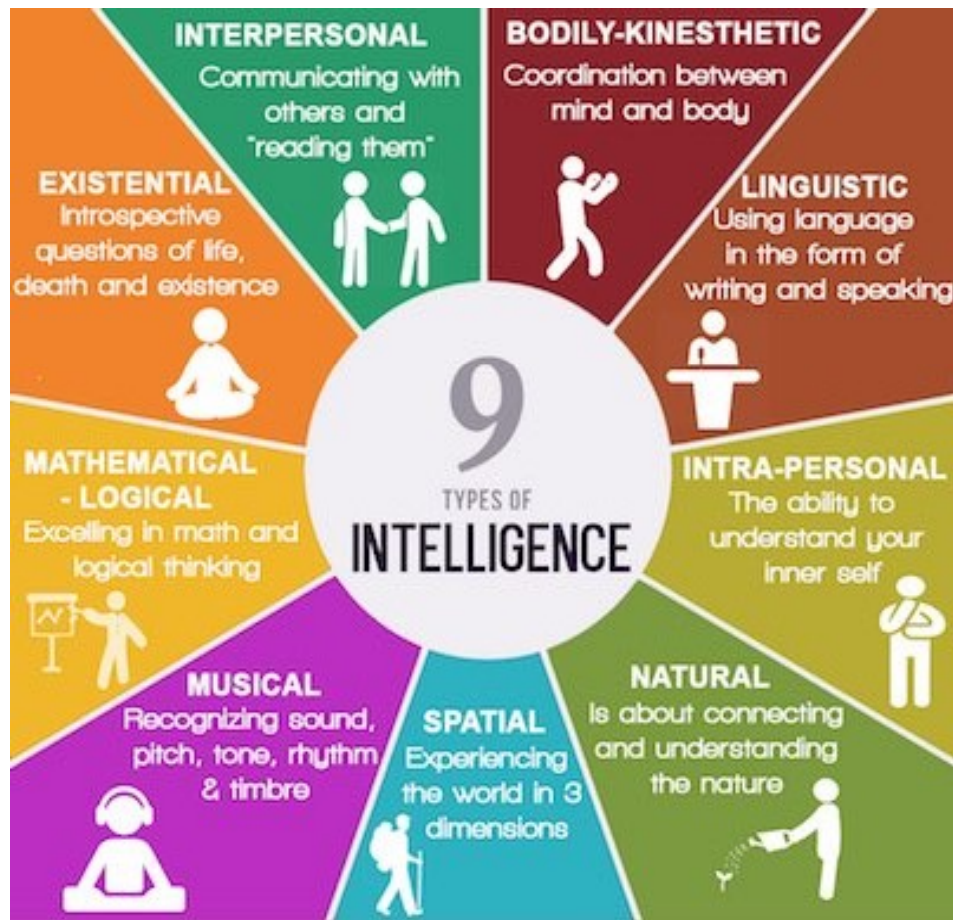


BMIT Benefits



- Make the right move in your career
- Find your SWOT analysis by our report

BMIT Benefits



- *Find out the level of multiple intelligence in you with our report*

BMIT Benefits

RIDGE COUNT	INBORN POTENTIAL
• < 60	LOW
• 61-70	AVERAGE
• 71-90	ABOVE AVERAGE
• 91-140	GOOD
• 141-180	VERY GOOD
• 181-200	EXCELLENT
• 200 +	OUTSTANDING



• *FIND OUT YOUR TFRC*

• TFRC (TOTAL FINGER RIDGE COUNT)

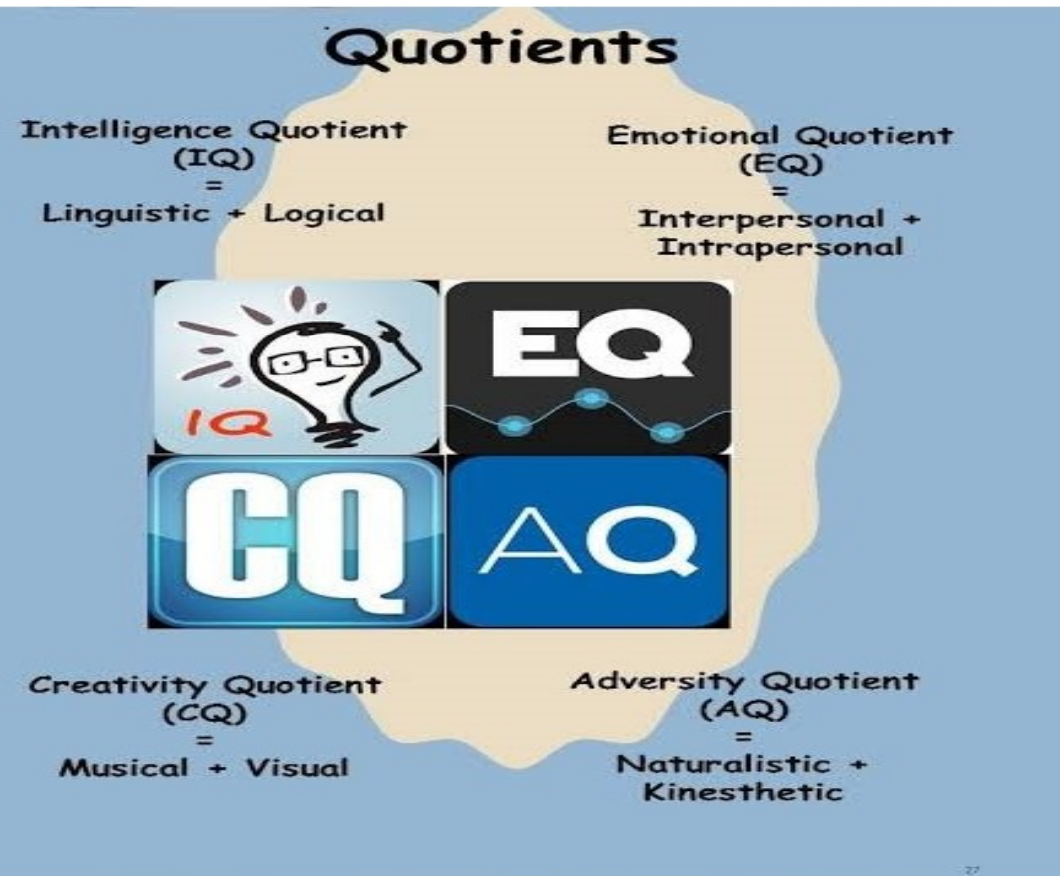


BMIT Benefits

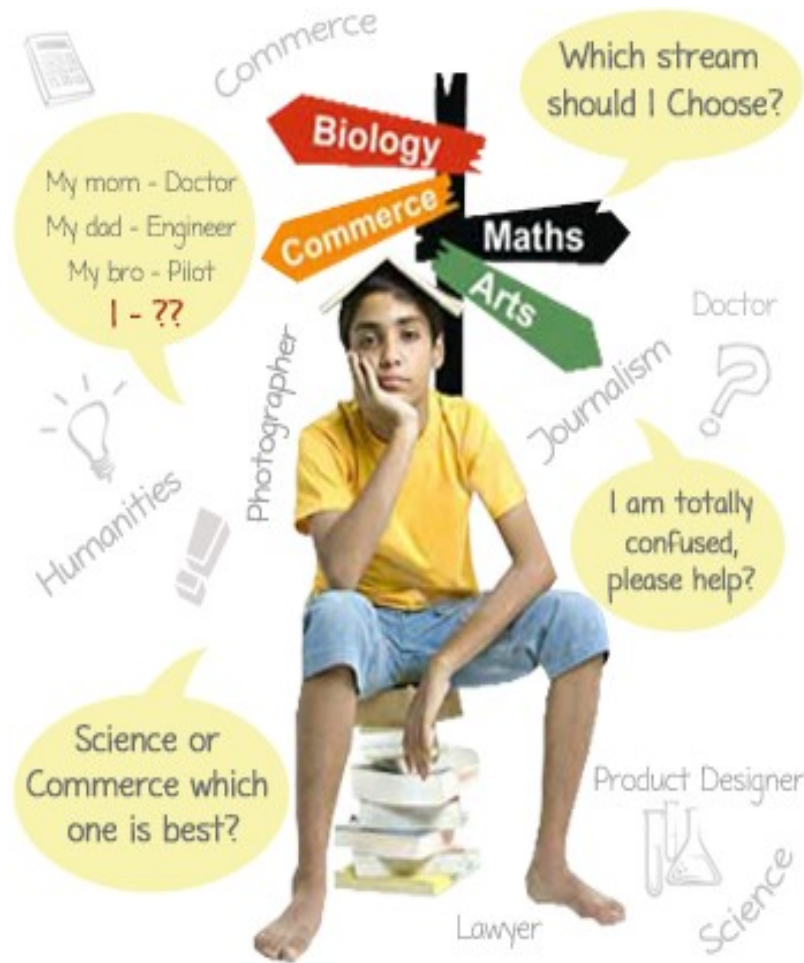


	Parietal Lobe Kinesthetic Capability	Occipital Lobe Visual Capability	Temporal Auditory Capability
Main Function			
Rating			
Characteristics	<p>Prefer to use physical hands-on and practical activities to learn and understand</p> <ul style="list-style-type: none"> - Active and have high bodily-kinesthetic and learning sensitivity; encouraged to use sensory and hands-on, practical activities in learning. - Not necessarily be forced to sit quietly during revision; - Practical activities driven. 	<p>Prefer to use graphics stimulation, graphs, flow-charts, reading and observation to learn</p> <ul style="list-style-type: none"> - Attentive, likes to observe and have excellent grasp of direction and space; - Encouraged to record all observation and to visualize the images/scenes while reading. - Graphics / Graphs / Charts / Words driven. 	<p>Prefer to use listening and discussion:</p> <ul style="list-style-type: none"> - Strong auditory listening capabilities - Encourage use listening repetition content during learning. - Discussion
Learning Suggestions			

BMIT Benefits



Who am I ?



BMIT Benefits



**STREAM
SELECTION**



CAREER



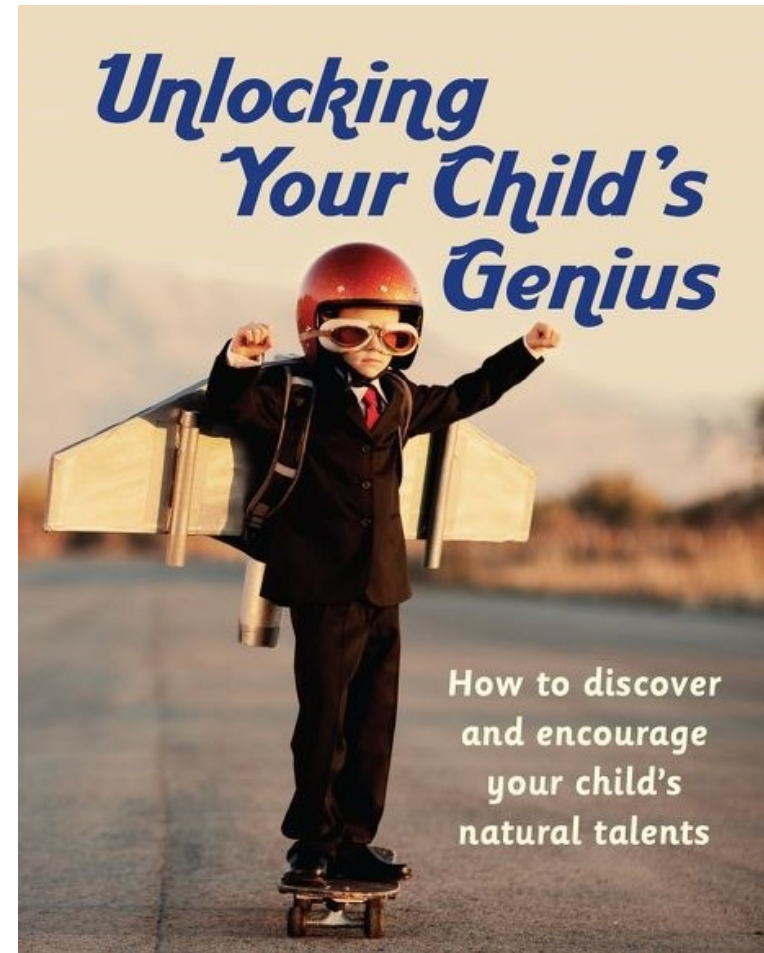
REMEDIES



BMIT

is a Revolutionary CONCEPT
which can help to build the future of yourself and of your CHILD

Imagine how
successful you and your
child can be with a
brilliant mind, Lightning-
fast learning skills, an
accurate lasting
memory, and
the creativity and
problem solving skills of
a **GENIUS.**





ARE YOU READY?

you cannot catch the brain or
intelligence,
but definitely the fingers..

Get your BMI TEST NOW
to understand
self and world.



With Regards,



SAKTHI

9444550443

sakthi@neelinfotech.net

NLP Master Practitioner | Corporate Trainer
Motivational Trainer | Brain Mapping | Career Guidance